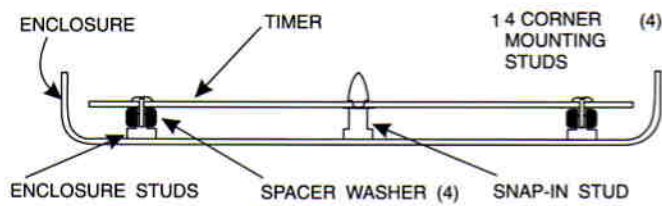


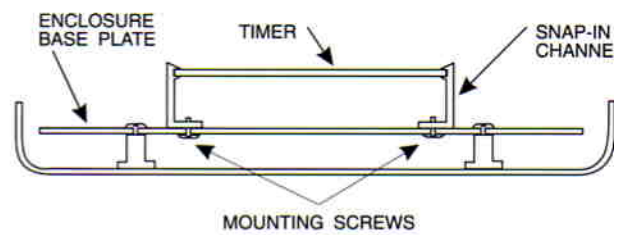
MODEL NUMBER	TBDAC –					TBDDC –				
	16	24	32	40	48	16	24	32	40	48
Number of outputs	1-16	1-24	1-32	1-40	1-48	1-16	1-24	1-32	1-40	1-48
Line voltage	100 to 260 VAC 50/60 Hz					12 to 24 VDC				
Load output rating	2 AMPS									
Circuit protection	2 AMP Fuse 2 AG Slow Blow									
Operating Temperature range	–40° to +140° F									
Timing range	ON-TIME 30 to 350 milliseconds in 5 milliseconds steps					OFF-TIME 1 to 180 seconds in 1second steps				
Timing accuracy	± 0.5% of set point									
On demand control	External Pressure Switch with Memory									
Load output indicators	Red Light Emitting Diodes									
Programmed setting indicator	Three Position LED Digital Display									
Number of blowdown cycles	0 to 25									
Timer Board	10 <sup>3</sup> / <sub>4</sub> " x 7 <sup>3</sup> / <sub>4</sub> " Glass Epoxy with RTV Conformal Insulation.									
Board Mounting	Stand-off studs or snap-in "U" channels (See installation instructions)									
Enclosure	Minimum 12" x 12" x 6" NEMA-4 (Optional)									

**Fig. 1**



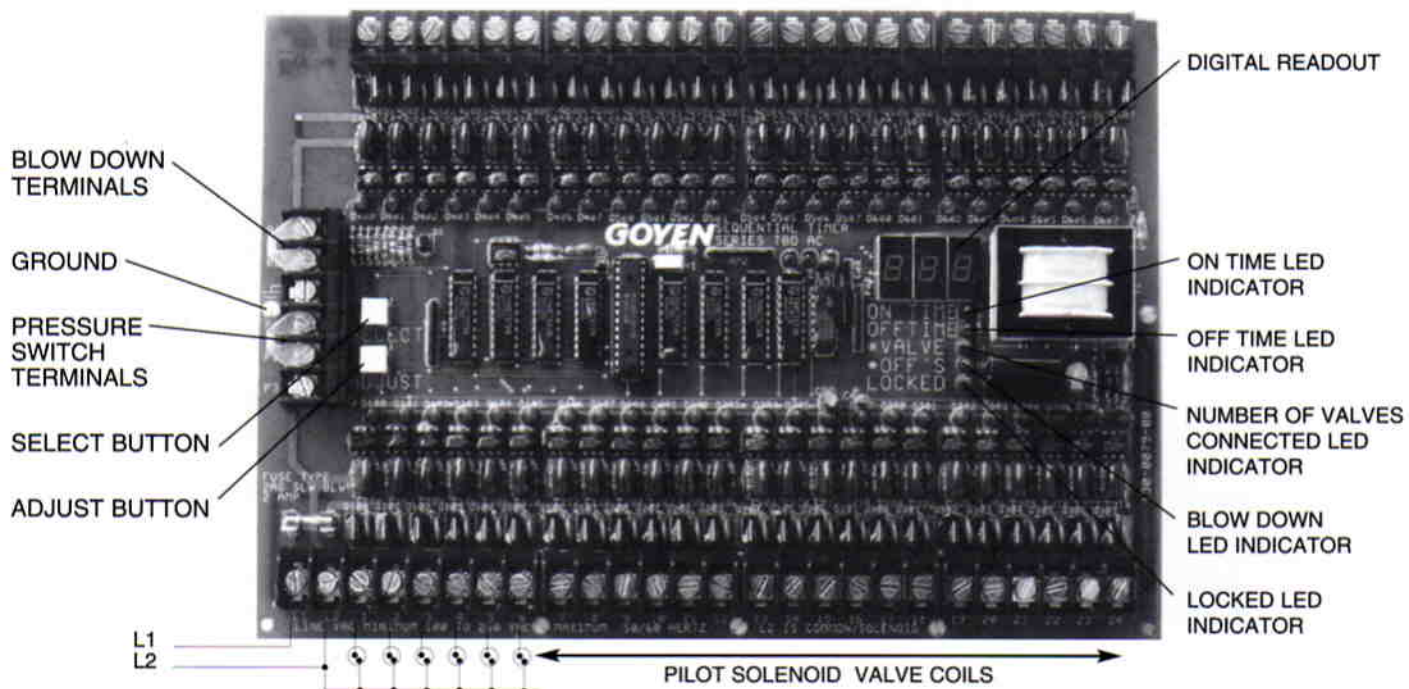
**Fig. 1**

**Fig. 2**

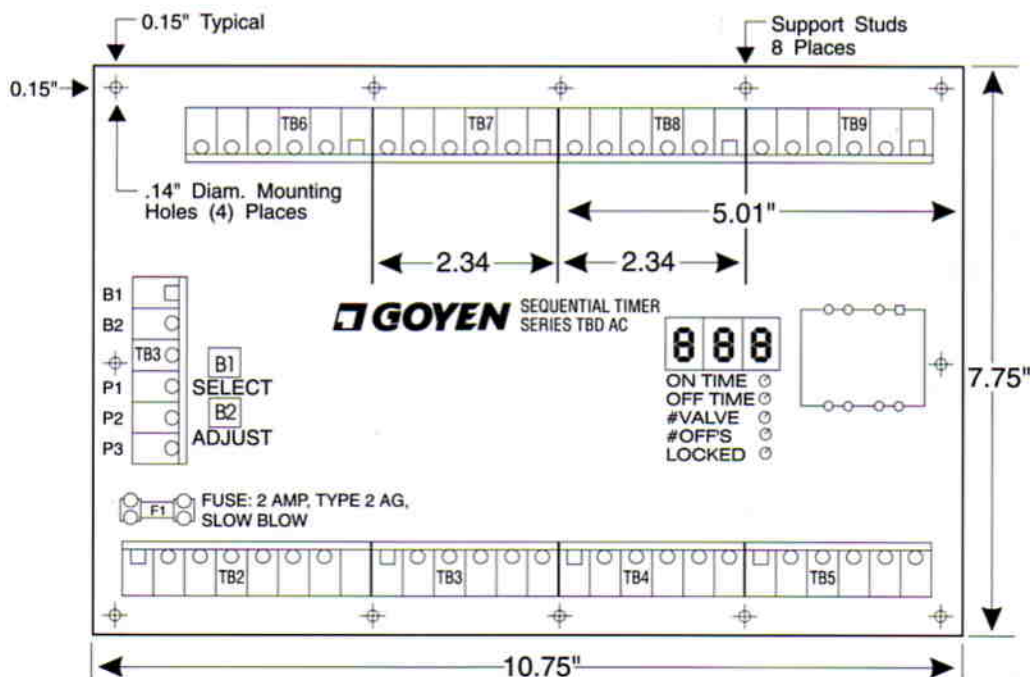


**Fig. 2**

**Fig. 3**



## MOUNTING DIMENSIONS



NOTE: Maximum Height is 1 7/16"



# INSTALLATION

- ★ Mount the timer board to the enclosure base plate with the stand-off studs provided. The paper template included locates the 4 corner mount locations. Drill 4 corner mount holes as instructed on the template and secure the studs with screws provided. Then screw mount timer board to the corner studs. The 8 supports, factory installed to the timer board, provide additional stability to the board, see Fig. #1. Alternately the board can be mounted to the base plate using (2) snap-in "U" channels (optional), see Fig. #2.
- ★ Connect Line Input Power, AC voltage to terminals marked L1 (Active Line) & L2 (Neutral Line). DC voltage to terminals marked Negative - (Neutral Line) & Positive + (Active Line). Note line voltage must match coil voltage.
- ★ Connect output terminals to pilot valve solenoid coils. Connect common side of coils to L2 (Neutral Line) on AC voltage. Connect common side of coils to Positive + (Active Line) on DC voltage.
- ★ Pressure Switch: If pressure switch is used, disconnect jumper between terminals P1 & P2 and connect to pressure switch. Pressure switch is to close contacts on high pressure setting.
- ★ Blowdown: If blowdown feature is used, disconnect jumper between terminals B1 & B2 and connect to the auxiliary contacts on the fan motor starter. Contacts are to open when fan is stopped.
- ★ Ground: Connect ground terminal to ground.
- ★ Establish power to board and adjust "ON" time, "OFF" time, number of outputs used and number of blowdown cycles required. See programming instructions for details.

## PROGRAMMING INSTRUCTIONS

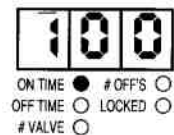
Press the "Select" button to illuminate the LED indicator adjacent to the function required, then press the "Adjust" button to the required setting which will be displayed on the Digital Readout. After all functions have been set, push the "Select" button to the Locked LED indicator. In the locked position, the Digital Readout will display the last setting, which is the number of blowdown cycles programmed.

To check a specific function setting, push the "Select" button to illuminate the desired function LED, the setting is then shown on the Digital Readout.

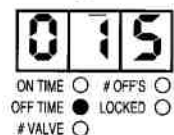
- ★ The ON TIME setting is adjustable from 30 to 350 milliseconds in 5 millisecond increments.
- ★ The OFF TIME setting is adjustable from 1 to 180 seconds in 1 second increments.
- ★ The NUMBER OF VALVES CONNECTED setting is adjustable from 1 through the total number of outputs available on the Timer Board.
- ★ The NUMBER OF BLOWDOWN CYCLES setting is adjustable from 0 to 25 cycles.

## PROGRAMMING EXAMPLE

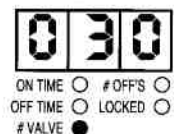
**STEP #1 – ON TIME** – Press the "Select" button until the "ON TIME" LED indicator is illuminated, then press the "Adjust" button until the required ON TIME in milliseconds is shown on the Digital Readout. [100 milliseconds illustrated].



**STEP #2 – OFF TIME** – Press the "Select" button until the "OFF TIME" LED indicator is illuminated, then press the "Adjust" button until the required OFF TIME in seconds is shown on the Digital Readout. [15 seconds illustrated].



**STEP #3 – NUMBER OF VALVES CONNECTED** – Press the "Select" button until the "# VALVE" LED indicator is illuminated, then press the "Adjust" button until the required NUMBER OF VALVES CONNECTED is shown on the Digital Readout. [30 valves illustrated].



**STEP #4 – BLOWDOWN CYCLES** – Press the "Select" button until the "# OFF'S" LED indicator is illuminated, then press the "Adjust" button until the required number of BLOWDOWN CYCLES is shown on the Digital Readout. [6 cycles illustrated]. **Caution:** Do not over-clean the filters.

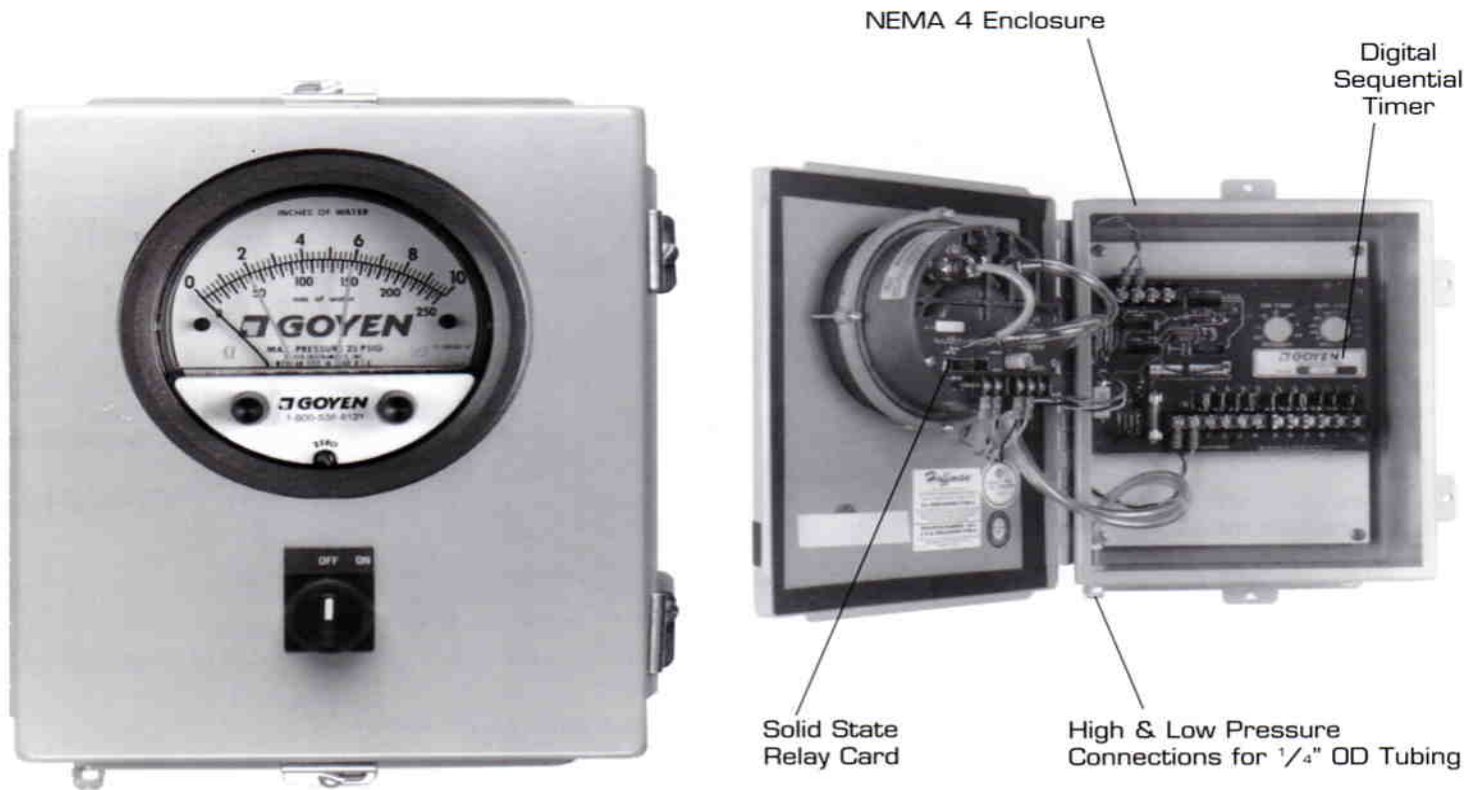


**STEP #5 – SETTINGS LOCKED** – Press the "Select" button until the "LOCKED" LED indicator is illuminated. All settings are now locked in and the Digital Readout will display the last setting, which is the number of blowdown cycles programmed [6 cycles illustrated]. The "#OFF'S LED" indicator will also stay illuminated.



In addition to our 16, 24, 32, 40 & 48 Station Digital Timers, Goyen offers 4, 6, 8, & 10 Station Digital Timers with the same features. Data Sheet available on request.

We also offer a Differential Pressure Controller that provides a means for "Demand Cleaning", which is illustrated below:



The Controller causes the Sequential Timer to start when the differential pressure through the Dust Collector reaches the gauge high set point and to stop when the pressure drops to the low set point.

For additional information regarding these products please contact us at **1-800-538-8121** (Outside California).

Industry Air Sales Ltd.

**Goyen Valve Corp.**



Distributed By:

**Industry Air Sales Ltd.**

E-Mail: [info@industryairsales.com](mailto:info@industryairsales.com)

2 Automatic Road, Unit 123  
Brampton, Ontario, Canada  
L6S 6K8  
Tel: 888-211-0171 / 905-458-8900  
Fax: 905-458-4599  
[www.industryairsales.com](http://www.industryairsales.com)

**IndustrialZONE.com™**

Your Portal to the Industrial World

**IndustrialZone**  
P.O. Box 667306  
Houston, Texas 77266  
United States

(713)-395-1508  
Fax: (713) 893-6924  
[support@industrialzone.com](mailto:support@industrialzone.com)  
[www.industrialzone.com](http://www.industrialzone.com)