



INSTRUCTIONS AND PARTS LIST POWER HAMMER



DAKE (Division of JSJ)
724 Robbins Road
Grand Haven, Michigan 49417
616.842.7110 Phone 800-937-3253
616.842.0859 Fax 800-846-3253
Web: www.dakecorp.com
E-mail : customerservice@dakecorp.com
technicalsupport@dakecorp.com



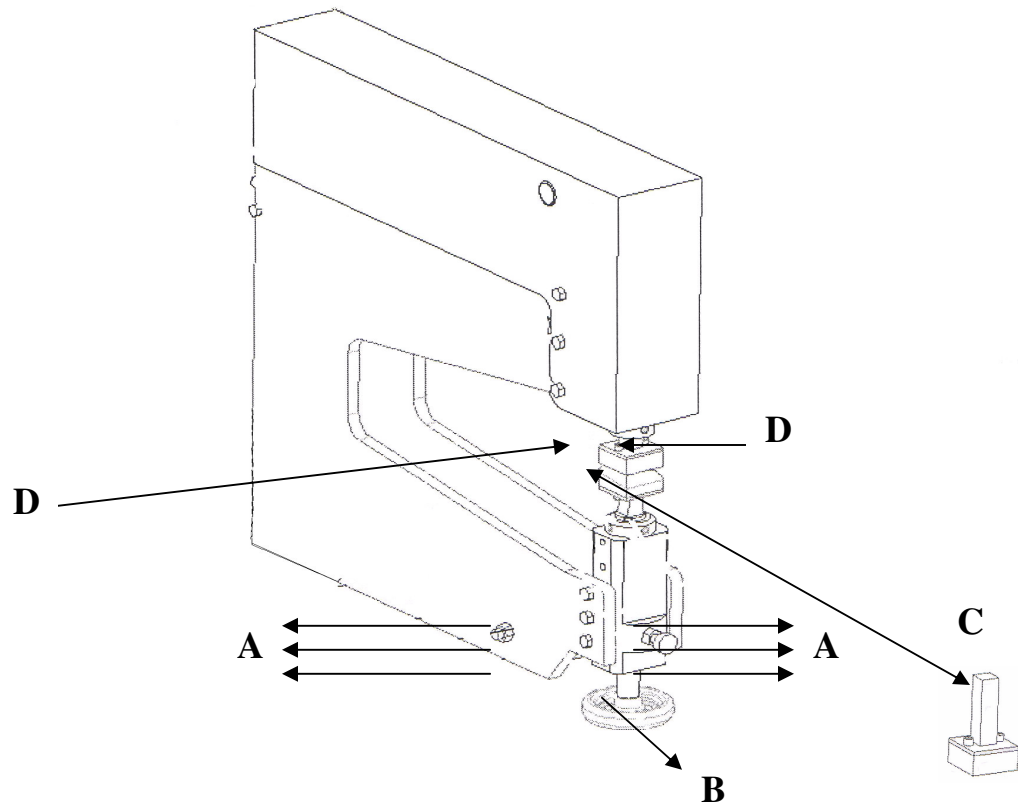
Set up and Operation of the Dake Power Hammer

Once you remove the power hammer from the packaging you will need to install the shaping dies to be used and the wheels.

WARNING !!!

Unplug the power hammer from the electrical source before changing the dies.

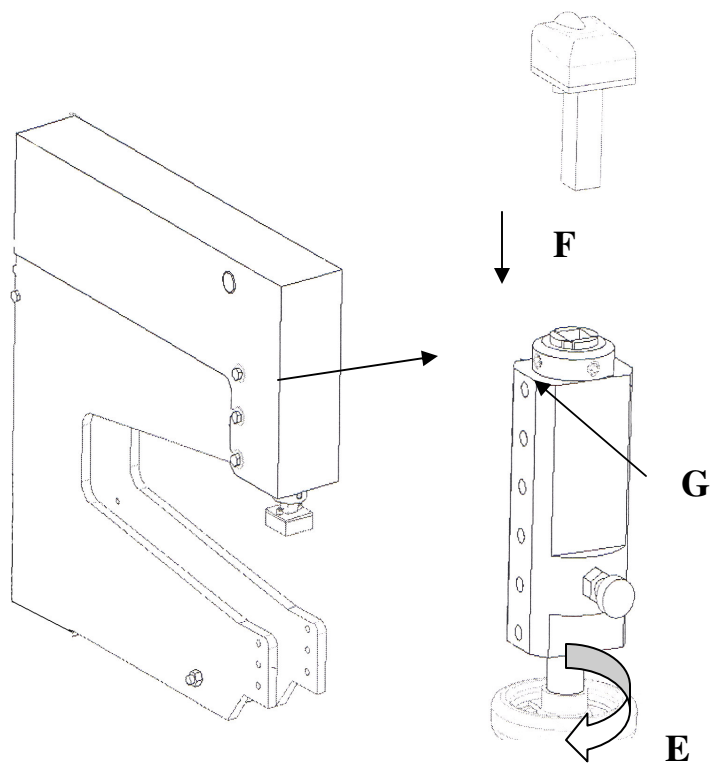
- A. Remove the 6 bolts from the adjustable bottom sleeve.**
- B. Remove the adjustable bottom sleeve from the side plates.**
- C. Insert die holder with the desired die attached into the slider. Make sure the die holder is bottomed into the slider.**
- D. Tighten the two hex socket set screws to secure the upper die holder.**





Set up and Operation of the Dake Power Hammer

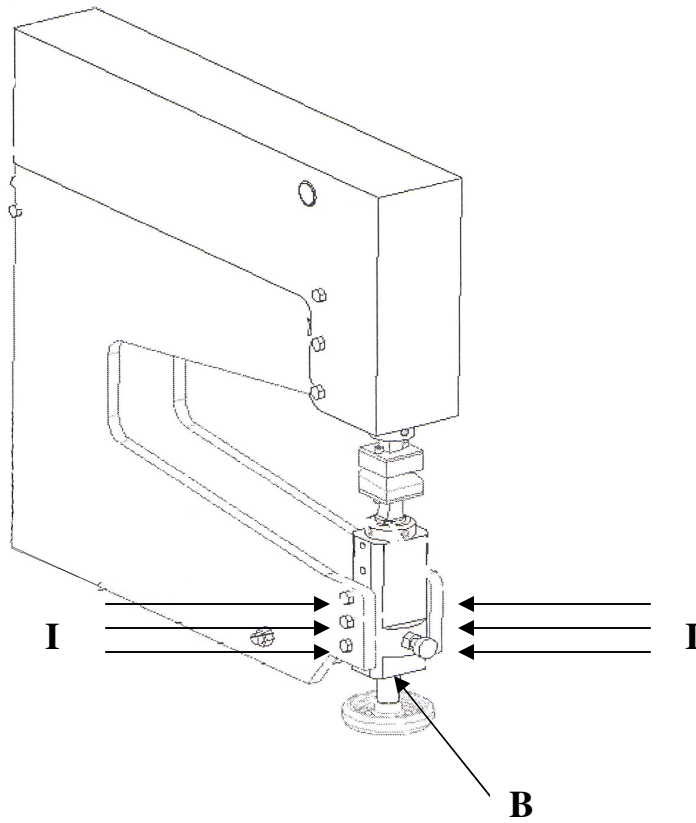
- E. Rotate the adjusting screw handle to move the bottom adjustment rod down.**
- F. Insert the die holder with the desired die attached into the adjustable bottom sleeve. Make sure the die holder is bottomed into the adjustable bottom sleeve.**
- G. Snug up the two hex socket set screws on the adjustable bottom sleeve to hold the die holder firmly but still allow it to move up by turning the adjusting screw handle.**





Set up and Operation of the Dake Power Hammer

I. Insert adjustable bottom sleeve (B) and attach six bolts through the side plates and into the adjustable bottom sleeve.





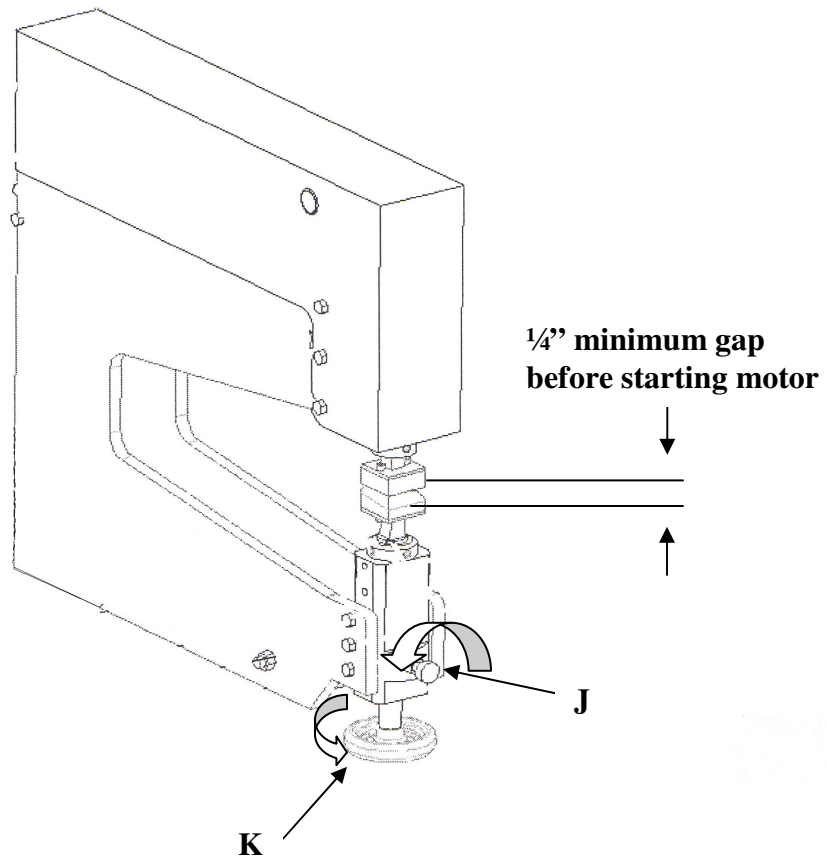
Set up and Operation of the Dake Power Hammer

J. Make sure the lock screw on the adjustment bottom sleeve is loose.

K. Rotate adjusting screw handle to move the lower die to the upper die.

WARNING !!!!

For safe operation and possible die damage always adjust the gap between the upper die half and the work piece to a minimum of $\frac{1}{4}$ " before starting motor.

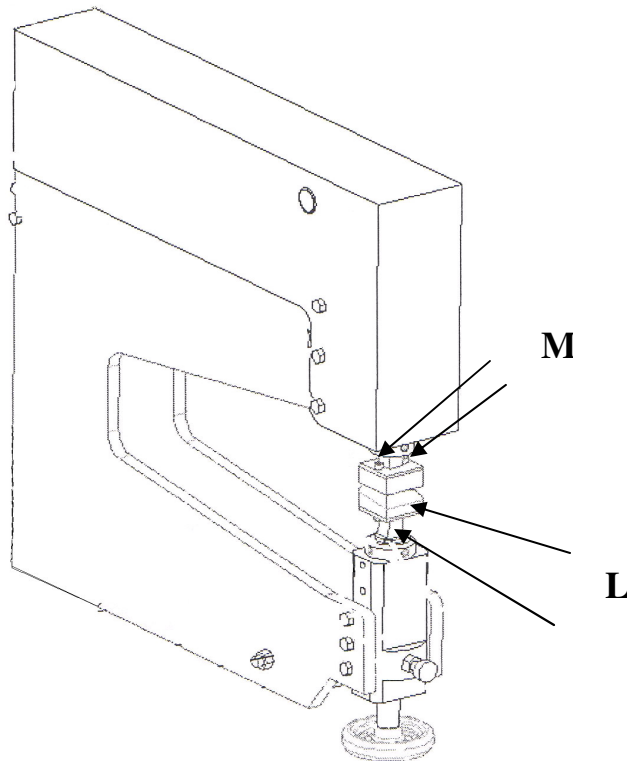




Set up and Operation of the Dake Power Hammer

L. Check the two set screws on the die holder to see if they are tight. These hold the lower die firmly in place.

M. The upper and lower dies need to be lined up. If they do not line up, loosen the bolts holding the dies to the die holders and align the dies. Don't forget to retighten these bolts.





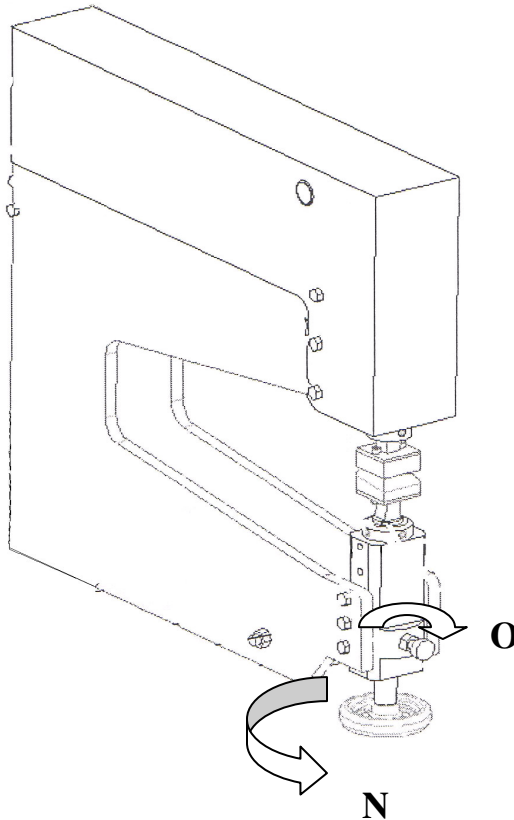
Set up and Operation of the Dake Power Hammer

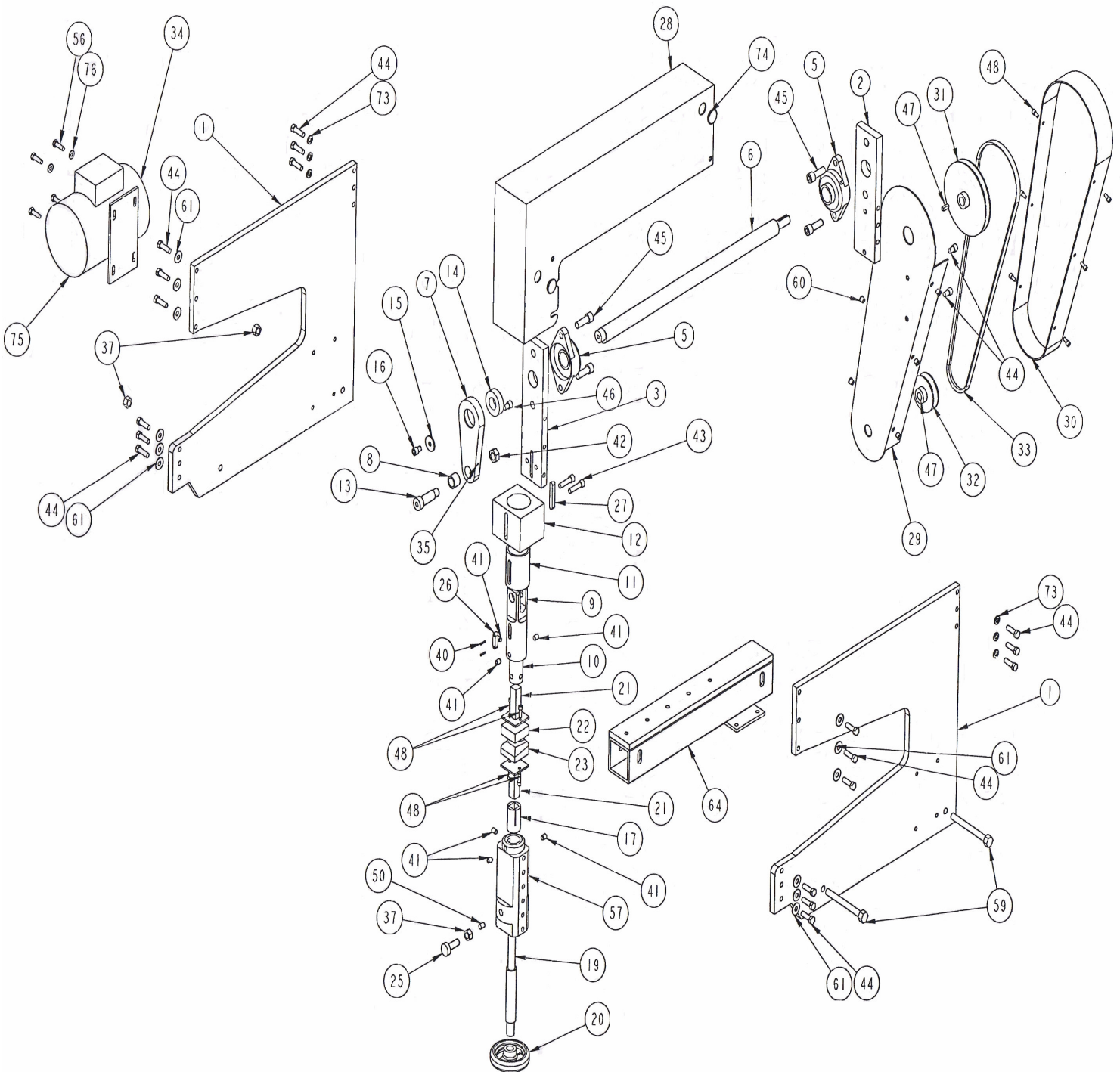
WARNING !!!

Before turning on power to your Dake power hammer be sure to review all safety stickers and warnings.

N. With the motor turned on, the upper die holder will begin to oscillate. Rotate the adjusting screw handle to move the lower die up until just before it touches the upper die. This is a good initial setting to try shaping with.

O. With the die gap set to your desired setting, tighten the lock screw on the adjustable bottom sleeve to lock in the gap setting. Repeat steps N and O for any future gap adjustments, up or down.







Item #	Part description	Qty	Part #
1	Side Plate	2	87160
2	Rear spacer Plate	1	87153
3	Front Mount Plate	1	87155
5	2 Bolt Flange Bearing	2	301907
6	Offset Shaft (27")	1	301908
7	Connecting Rod	1	87157
8	Cast Bronze Bushing	1	301943
9	Slider	1	87156
10	Top Collet	1	87150
12	Slide Gulide & Bushing	1	87158
13	Shoulder Bolt	1	301909
14	Bearing	1	301939
15	Washer (center hole 5/16 bolt)	1	301910
16	Socket head cap screw 5/16-18UNC X 1	1	43434
17	Bottom Collet	1	87159
19	Bottom Adjustment Rod	1	87149
20	Hand Wheel	1	87173
21	Die Holder	2	87152
22	Upper Die	1	
23	Lower Die	1	
24			
25	Knurled Head Screw 1-1/2"	1	301946
26	Alignment Key	1	87151
27	Support Key	1	87148
28	Top Cover (Red)	1	301891
29	Belt Cover Inner (Red)	1	301890
30	Cover Belt (Red)	1	301892
31	Top Pulley	1	301953
32	Bottom Pulley	1	301947
33	Belt	1	
34	Electric Motor	1	10079-07
35	Grease Zerk (1/4 x 28 straight)	1	301912
36			
37	Nut 1/2-13 UNC	3	301913
38			
39			
40	Socket head Cap Screw 6-32 x 1/2	2	301914
41	Half Dog Hex Socket Set Screw 3/8-16 UNC x 1/2	6	301915
42	Nut 5/8-11 UNC	1	301916
43	Socket Head Cap Screw 3/8-16 UNC x 1	2	43451

	1/2		
44	Grade 8 Hex Cap Screw 3/8-16 UNC x 1 1-1/4	20	301917
45	Grade 8 Hex Head Cap Screw 5/8-11 UNC X 1-1/4	4	301918
46	Socket Head Cap Screw 1/4-20 x 3/8	1	43411
47	Key Stock 3/16 x 3/16	1	386?
48	Socket Head Cap Screw 1/4-20 x 3/4	10	43414
49			
50	UHMW Poly Rod	1	
51			
52			
53			
54			
55			
56	Grade 8 Hex Bolt 5/16-18 x 1	4	301929
57	Bottom Sleeve	1	87147
58	Cross Brace	2	301893
59			
60	RivNuts 1/4-20	6	
61	Grade 8 Washer 3/8	12	301933
62			
63			
64	Bottom Spacer, Base	1	87162
67			
68			
69			
70	Grade 8 Nut 5/16	4	301934
71	Grade 8 Hex Bolt 1/2-13 x 8	2	301935
72	Belt	1	301936
73	Grade 9 Lock Washer 3/8	6	301937
74	Finishing Plug	3	301948
75			
76	Washer 5/16 Grade 8	8	301938

	Parts Not Shown	Qty	Part #
	Stand	1	716552
	Caster Standard 300lbs. Capacity	2	301931
	Caster Swivel, Total Locking 300 lbs.	2	301932

You are now ready to start shaping metal

Everyone has their own technique when it comes to shaping and you will need to find your own. So, practice, think , practice and think some more before practicing again. We have found that like forming by hand, it is easier to get the desired shape using the Dake power hammer by using several steps to “sneak up” on the final shape, versus trying to get the shape in one step.

A good source of information on how to use a power hammer type machine like this , is reading any of the several books on sheet metal shaping currently available.

Have fun and be safe!!!!

Dake

Maintenance

You need to maintain your Dake power hammer as you would any other piece of shop equipment. More use requires more maintenance. This should include, but not limited to checking and greasing bearings and bushings regularly. Check for any loose components, lines and connections and replace as needed.

Safety stickers that are located on the Dake power Hammer

WARNING!!!!

Review all safety stickers before operating this machine.



Part number
301889



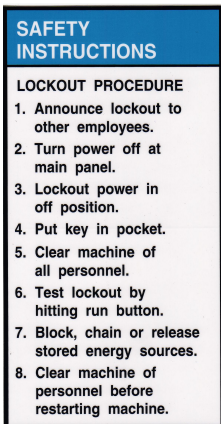
Part number
85425



Part number
300168

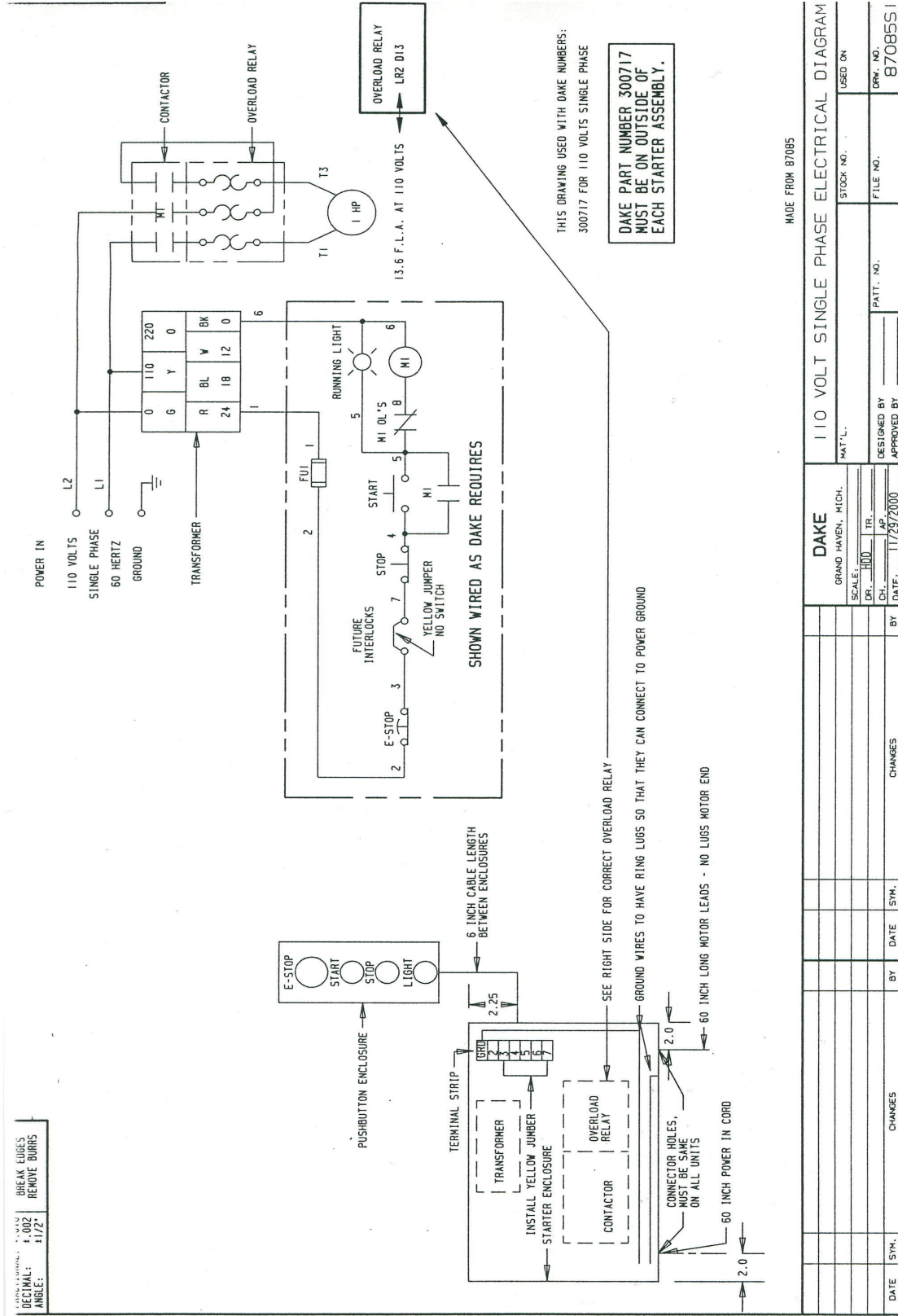


Part number
84395



Part number
76462

110 volt Machine



MADE FROM 87085

DAKE		110 VOLT SINGLE PHASE ELECTRICAL DIAGRAM	
GRAND HAVEN, MICH.	MAT'L.	STOCK NO.	USED ON
SCALE: DR. HOD TR.	DESIGNED BY	FILE NO.	DRW. NO.
CH. AP	APPROVED BY	PATT. NO.	8708551
DATE: 11/29/2000	BY	CHANGES	
	DATE	SYN.	
	CHANGES		

220 volt single phase machine

