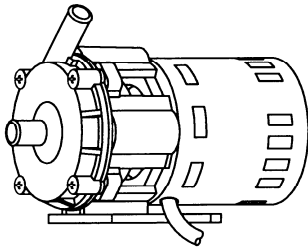




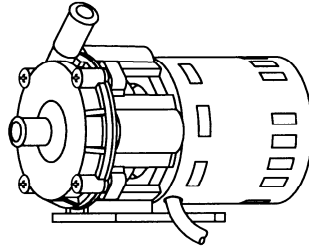
# MARCH PUMPS

1819 PICKWICK AVE., GLENVIEW, IL 60026-1306, U.S.A  
 PHONE: (847) 729-5300 - FAX: (847) 729-7062  
 WWW.MARCHPUMP.COM

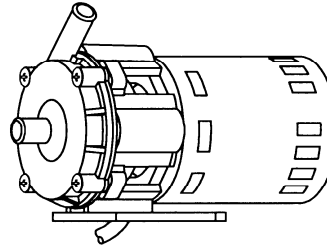
**MDX-1/2**  
**MDX-5/8**  
**MDX-3 1/2**  
**MDX-3 5/8**



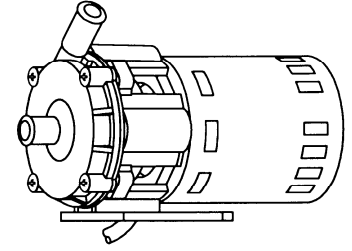
**MDX-1/2**



**MDX-5/8**



**MDX-3 1/2**



**MDX-3 5/8**

## PUMP CONSTRUCTION:

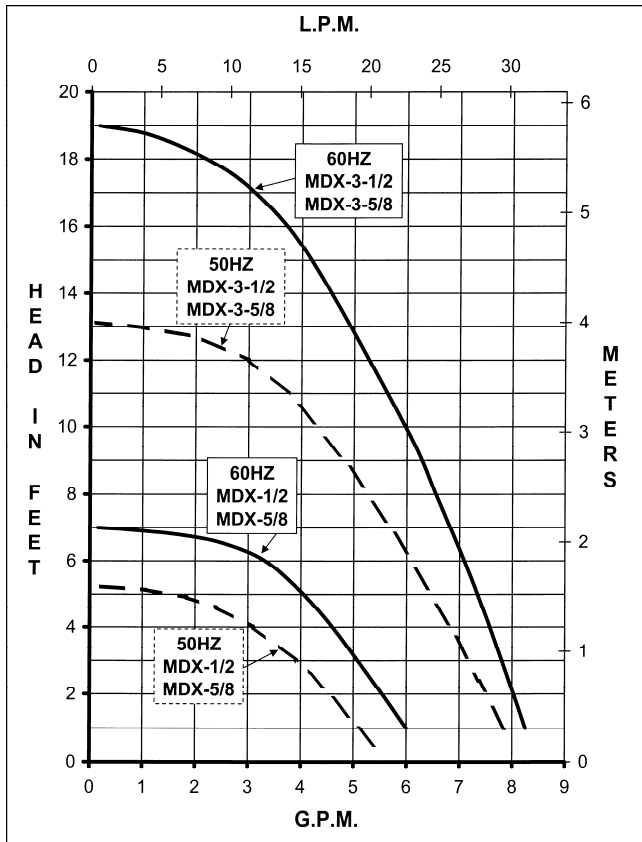
March "Orbital" Magnetic Drive Pumps eliminate the conventional shaft seals found in most pumps. Hence, there is no rotating seal to wear and allow the liquid being pumped to leak out. There are only two areas in this type construction that rotate and could wear out. One area is the motor shaft and bearings. The second area is the impeller rotating on a stationary shaft, and hence these are the only two areas where wearing can occur. All parts can be easily serviced with the use of a screwdriver and replaced in the field if necessary. See the Repair Parts List for necessary replacement items.

## OPERATION:

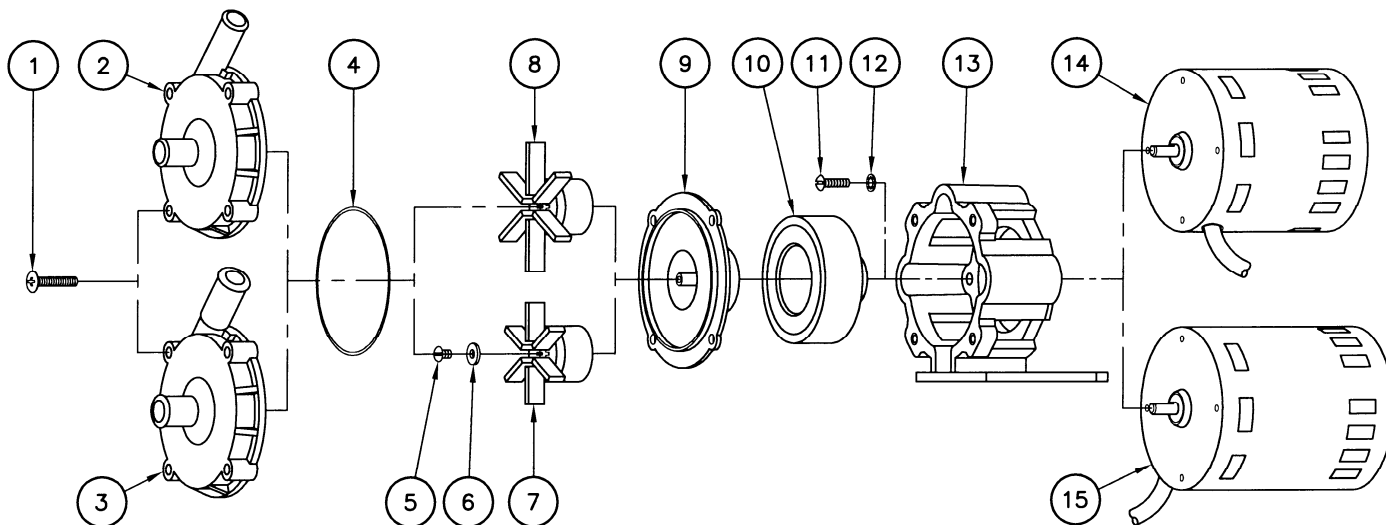
Pumps are not self priming and will not produce a suction lift and must be installed with a positive flooded suction. The pumps should not be run dry for more than 60 seconds as the plastic impeller will squeal and bind onto the stationary shaft.

## ELECTRICAL:

Models are 115 Volt or 230 Volt, 60Hz or 50/60Hz, 1phase, A.C. The motors are all thermal overload protected and are UL recognized. The black and white lead should be connected to your power source. The green lead must be connected to the ground.



SPECIFICATIONS			MDX-1/2	MDX-5/8	MDX-3-1/2	MDX-3-5/8
Max Flow	50Hz	lpm	22	22	30	30
	60Hz	gpm	6	6	8.5	8.5
Max Head	50Hz	m	1.6	1.6	4	4
	60Hz	ft (psi)	7 (3.0)	7 (3.0)	19 (8.2)	19 (8.2)
Inlet			1/2" OD	5/8" OD	1/2" OD	5/8" OD
Outlet			1/2" OD	5/8" OD	1/2" OD	5/8" OD
Max Internal Pressure	psi		50	50	50	50
	bar		3.4	3.4	3.4	3.4
Max Liquid Temperature	°F		190	190	190	190
	°C		87	87	87	87
Packed Weight			kg/lbs	2.5/5.5	2.5/5.5	3/6
Motor Type			Air Cooled	Air Cooled	Air Cooled	Air Cooled
			115 or 230	115 or 230	115 or 230	115 or 230
Phase			1	1	1	1
50Hz	Volts		230	230	115	230
	Watts		64	64	118	120
	Amps		0.5	0.5	1.55	0.7
	Kw		0.018	0.018	0.029	0.029
	Rpm		1300	1300	2850	2850
60Hz	Volts		115	230	115	230
	Watts		59	59	115	114
	Amps		0.94	0.45	0.94	0.45
	Hp		1/55	1/40	1/55	1/25
	Rpm		1750	1750	1750	3450
Electrical Connection			Cord	Cord	Cord	Cord
Overall Pump Dimensions (Inches)	Height		4.94	4.97	4.94	4.97
	Width		3.88	3.88	3.88	3.88
	Length		7.09	7.34	7.69	8.11
Overall Pump Dimensions (cm)	Height		12.5	12.6	12.5	12.6
	Width		9.8	9.8	9.8	9.8
	Length		18.0	18.6	19.5	20.5



REPAIR PARTS LIST									
ITEM	DESCRIPTION	MATERIAL	QTY	PART #	MDX-1/2	MDX-5/8	MDX-3-1/2	MDX-3-5/8	
1	Screw #10-32 x 1" Lg.	Stainless Steel	4	0135-0180-1000	S	S	S	S	
2	Front Housing 1/2" O.D. Inlet & Outlet	Polypropylene	1	0135-0118-1000	S	O	S	O	
3	Front Housing 5/8" O.D. Inlet & Outlet	Polypropylene	1	0135-0117-1000	O	S	O	S	
4	"O" Ring	Buna N	1	0135-0007-1000	S	S	S	S	
5	Screw #8-32 x 1/4" Lg.	Stainless Steel	1	0135-0042-1000			S	S	
6	Thrust Washer	Ryton/Teflon/Carbon	1	0802-0057-1000			S	S	
7	Impeller Assembly (2.062" Dia.)	Polypropylene/Ceramic Mag.	1	0135-0043-0100			S	S	
8	Impeller Assembly (2.625" Dia.)	Polypropylene/Ceramic Mag.	1	0135-0026-0100	S	S			
9	Rear Housing	Kynar/Carbon Filled	1	0802-0043-1000	S	S	S	S	
10	Drive Magnet Assembly		1	0135-0126-0100	S	S	S	S	
11	Screw #8-32 x 5/8" Lg.	Stainless Steel	4	0618-0027-1000	S	S	S	S	
12	Lock Washer	Stainless Steel	4	0620-0010-1000	S	S	S	S	
13	Motor Connecting Bracket		1	0135-0168-0100	S	S	S	S	
14A	Motor – 1750 RPM – 115 Volts – 60Hz		1	0135-0109-1000	S	S			
14B	Motor – 1750 RPM – 230 Volts – 50/60Hz		1	0135-0112-1000	S	S			
15A	Motor – 3450 RPM – 115 Volts – 50/60Hz		1	0135-0036-1000			S	S	
15B	Motor – 3450 RPM – 230 Volts – 50/60Hz		1	0135-0037-1000			S	S	

NOTE: Contact Factory for other materials and/or parts not listed. **Legend:** S = Standard, O = Optional

**MATERIALS IN CONTACT WITH SOLUTION:**

MDX: Polypropylene, Kynar/Carbon Filled, Buna N, Ceramic Magnet

MDX-3: Polypropylene, Kynar/Carbon Filled, Ryton/Teflon/Carbon, Stainless Steel, Buna N, Ceramic Magnet

**NOTES:**

All specifications & data are based on pumping water and are intended for use as a guideline only. Ratings & dimensions may vary depending on the current motor being used.

**LIMITED WARRANTY:**

March pumps are guaranteed only against defects in workmanship or materials for a period of one year from date of manufacture pumping water. On all other solutions, contact the factory for application assistance. March Pump Application Worksheet 0750-0130-1000 is available for additional warranty information.