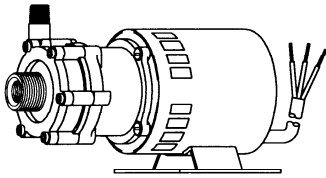




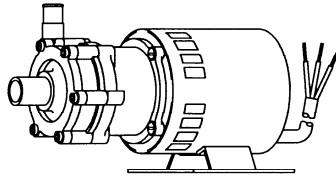
MARCH PUMPS

1819 PICKWICK AVE., GLENVIEW, IL 60026-1306, U.S.A
PHONE: (847) 729-5300 - FAX: (847) 729-7062
WWW.MARCHPUMP.COM

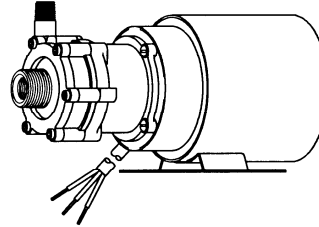
AC-2CP-MD
AC-2AP-MD
BC-2CP-MD
BC-2AP-MD



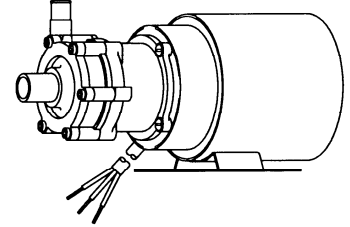
AC-2CP-MD



AC-2AP-MD



BC-2CP-MD



BC-2AP-MD

PUMP CONSTRUCTION & SERVICING:

March "Orbital" Magnetic Drive Pumps eliminate the conventional shaft seals found in most pumps. Hence, there is no rotating seal to wear and allow the liquid being pumped to leak out. The pumping action may eventually fail, however the liquid can never leak out. All pumps can be serviced with the use of screwdriver. The only moving part other than the motor is the Impeller Assembly. This assembly rotates on a stationary shaft and up against a thrust washer. These are the only parts that can wear, and may need to be replaced. See the Repair Parts List for replacement parts.

OPERATION:

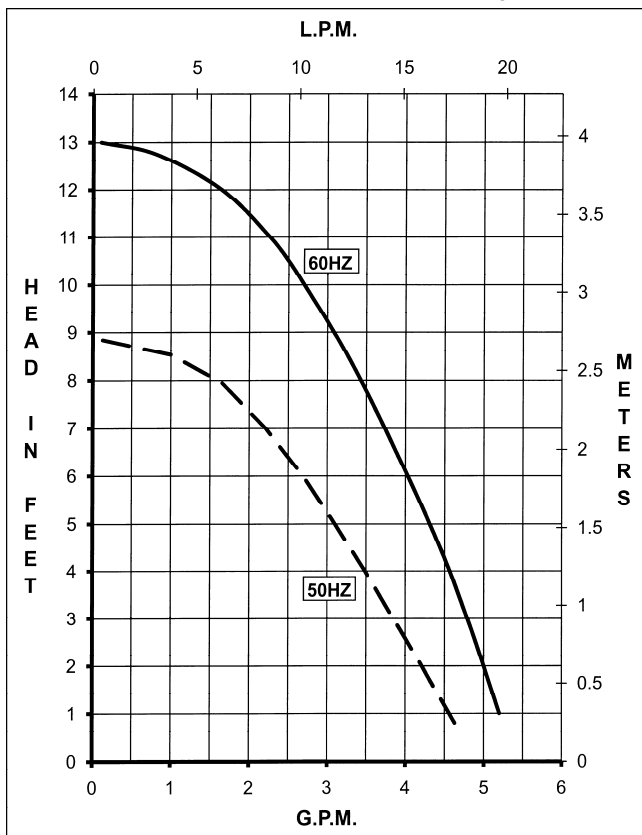
Pumps are not self priming and will not produce a suction lift and must be installed with a positive flooded suction. The liquid being pumped serves as lubrication for the Impeller Assembly spinning on the stationary shaft. If the pump is run dry, the impeller may squeal and eventually freeze onto the shaft. Various bushing materials are available for dry run protection. A trimmed impeller may be necessary when pumping a liquid with a specific gravity or viscosity greater than water as well in cases of high liquid temperature.

ELECTRICAL:

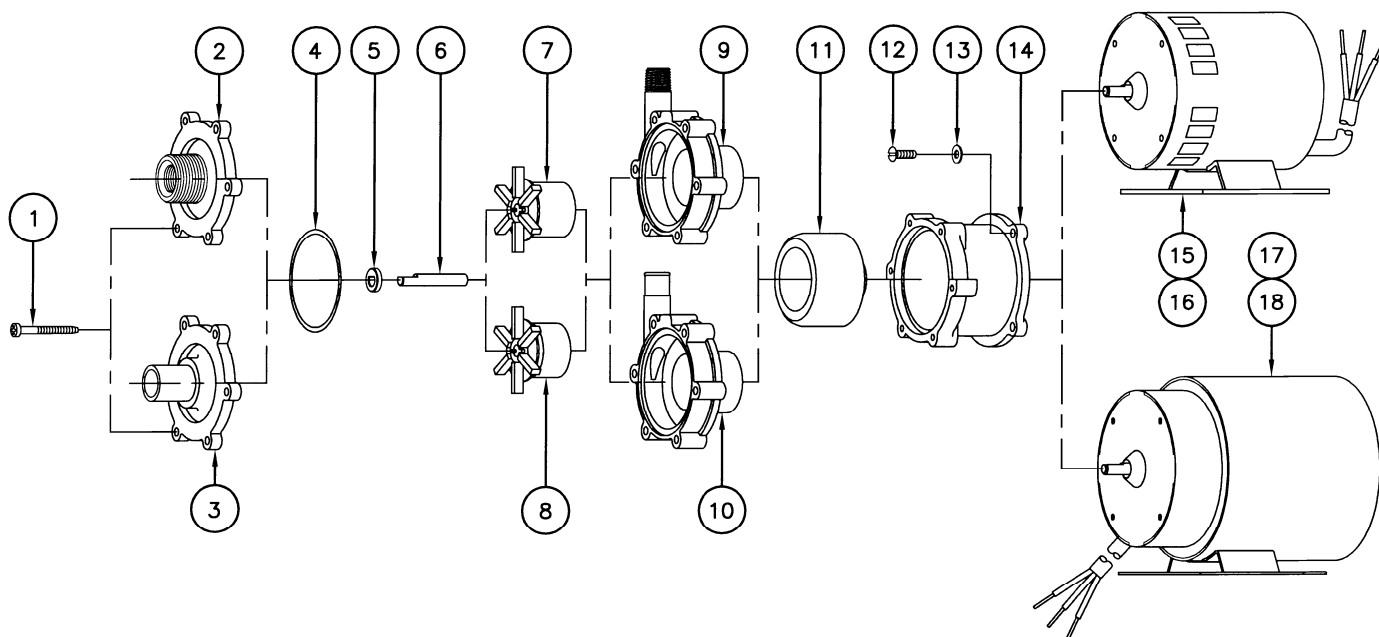
Models are 115 Volt or 230 Volt, 50/60Hz, 1 phase, A.C. The motors are thermal overload protected, and the motor and overload combinations are U.L. and C.S.A. listed. All cord sets are U.L. approved 18/3 wire with no plug attached. The Models AC-2CP-MD & AC-2AP-MD have a open-air fan cooled motor, with sleeve bearings, allowing the pumps to be run continuously. The BC-2CP-MD & BC-2AP-MD motor is blast cooled.

MODEL ABBREVIATIONS:

Motor: AC = Air Cooled, BC = Blast Cooled
CP = Threaded Inlet/Outlet, AP = Smooth Inlet/Outlet
MD = Magnetic Drive
BC models have an encapsulated impeller magnet.



SPECIFICATIONS			AC-2CP-MD	AC-2AP-MD	BC-2CP-MD	BC-2AP-MD
Max Flow	50Hz	lpm	18.5	18.5	18.5	18.5
	60Hz	gpm	5	5	5	5
	50Hz	m	2.7	2.7	2.7	2.7
	60Hz	ft (psi)	13 (5.7)	13 (5.7)	13 (5.7)	13 (5.7)
Max Head	50Hz	m	2.7	2.7	2.7	2.7
	60Hz	ft (psi)	13 (5.7)	13 (5.7)	13 (5.7)	13 (5.7)
Inlet		3/8" FPT & 3/4" MPT	3/4" OD	3/8" FPT & 3/4" MPT	3/4" OD	3/4" OD
Outlet		1/4" MPT	1/2" OD	1/4" MPT	1/2" OD	1/4" MPT
Max Internal Pressure	psi	50	50	50	50	50
	bar	3.4	3.4	3.4	3.4	3.4
Max Liquid Temperature	°F	190	190	190	190	190
	°C	87	87	87	87	87
Packed Weight		kg/lbs	2/4.5	2/4.5	3/6.5	3/6.5
Motor Type			Air Cooled 115 or 230	Air Cooled 115 or 230	Blast Cooled 115 or 230	Blast Cooled 115 or 230
Phase			1	1	1	1
50Hz	Volts	115 230	115 230	115 230	115 230	115 230
	Watts	84 82	84 82	75 66	75 66	75 66
	Amps	1.2 0.6	1.2 0.6	1.2 0.5	1.2 0.5	1.2 0.5
	Kw	0.018 0.018	0.018 0.018	0.018 0.018	0.018 0.018	0.018 0.018
	Rpm	2850 2850	2850 2850	2850 2850	2850 2850	2850 2850
	Volts	115 230	115 230	115 230	115 230	115 230
60Hz	Watts	77 75	77 75	73 66	73 66	73 66
	Amps	1.2 0.6	1.2 0.6	1.2 0.5	1.2 0.5	1.2 0.5
	Hp	1/40 1/40	1/40 1/40	1/40 1/40	1/40 1/40	1/40 1/40
	Rpm	3450 3450	3450 3450	3450 3450	3450 3450	3450 3450
	Volts	115 230	115 230	115 230	115 230	115 230
	Watts	77 75	77 75	73 66	73 66	73 66
Electrical Connection			Cord	Cord	Cord	Cord
Overall Pump Dimensions (Inches)	Height	4.5	4.5	4.56	4.56	4.56
	Width	3.5	3.5	3.91	3.91	3.91
	Length	7.39	7.77	8.36	8.73	8.73
Overall Pump Dimensions (cm)	Height	11.4	11.4	11.5	11.5	11.5
	Width	8.8	8.8	9.9	9.9	9.9
	Length	18.7	19.7	21.2	22.1	22.1



REPAIR PARTS LIST

ITEM	DESCRIPTION	MATERIAL	QTY	PART #	AC-2CP-MD	AC-2AP-MD	BC-2CP-MD	BC-2AP-MD
1	Screw, Self Tapping	Stainless Steel	6	0115-0062-1000	S	S	S	S
2	Cover 3/8" FPT x 3/4" MPT	Polypropylene	1	0125-0056-1000	S	O	S	O
3	Cover 3/4" OD Smooth	Polypropylene	1	0125-0096-1000	O	S	O	S
4	"O" Ring	Viton	1	0125-0065-1000	S	S	S	S
5	Thrust Washer	Ceramic	1	0130-0028-1000	S	S	S	S
6	Impeller Shaft	Ceramic	1	0125-0061-1000	S	S	S	S
7	Impeller & Magnet Encapsulated Assy.	Polypropylene	1	0125-0087-0200	O	O	S	S
8	Impeller & Magnet Assembly	Polypro./Ceramic Mag.	1	0125-0055-0100	S	S	O	O
9	Housing (Rear) 1/4" MPT	Polypropylene	1	0125-0058-1000	S	O	S	O
10	Housing (Rear) 1/2" OD Smooth	Polypropylene	1	1008-0001-1000	O	S	O	S
11	Drive Magnet Assembly		1	0125-0083-0100	S	S	S	S
12	Screw #8-32 x 1/2" Lg.	Stainless Steel	1	0150-0015-1000	S	S	S	S
13	Washer	Stainless Steel	4	0858-0004-1000	S	S	S	S
14	Motor Connecting Bracket		4	0125-0069-1000	S	S	S	S
15	AC Motor, 115 Volt, 50/60 Hz.		1	0125-0052-1000	S	S	O	O
16	AC Motor, 230 Volt, 50/60 Hz.		1	0125-0063-1000	S	S	O	O
17	BC Motor, 115 Volt, 50/60 Hz.		1	0125-0088-1000	O	O	S	S
18	BC Motor, 230 Volt, 50/60 Hz.		1	0125-0089-1000	O	O	S	S

NOTE: Contact Factory for other materials and/or parts not listed.

Legend: S = Standard, O = Optional

MATERIALS IN CONTACT WITH SOLUTION:

For AC-2CP-MD & AC-2AP-MD: Polypropylene, Ceramic, Viton®, Ceramic Magnet

For BC-2CP-MD & BC-2AP-MD: Polypropylene, Ceramic, Viton®

NOTES:

All specifications & data are based on pumping water and are intended for use as a guideline only. Ratings & dimensions may vary depending on the current motor being used.

LIMITED WARRANTY:

March pumps are guaranteed only against defects in workmanship or materials for a period of one year from date of manufacture pumping water. On all other solutions, contact the factory for application assistance. March Pump Application Worksheet 0750-0130-1000 is available for additional warranty information.