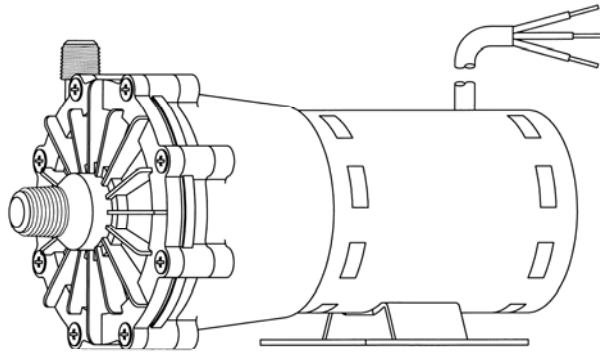




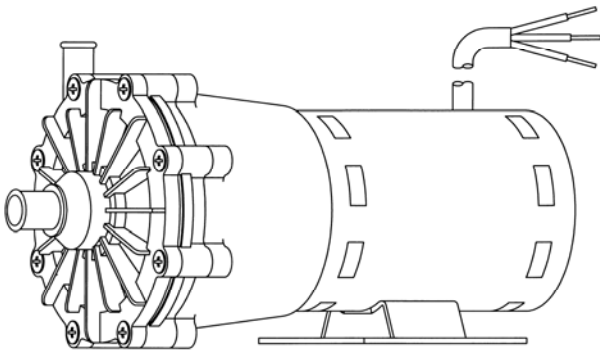
MARCH PUMPS

1819 PICKWICK AVE., GLENVIEW, IL 60026-1306, U.S.A
PHONE: (847) 729-5300 - FAX: (847) 729-7062
WWW.MARCHPUMP.COM

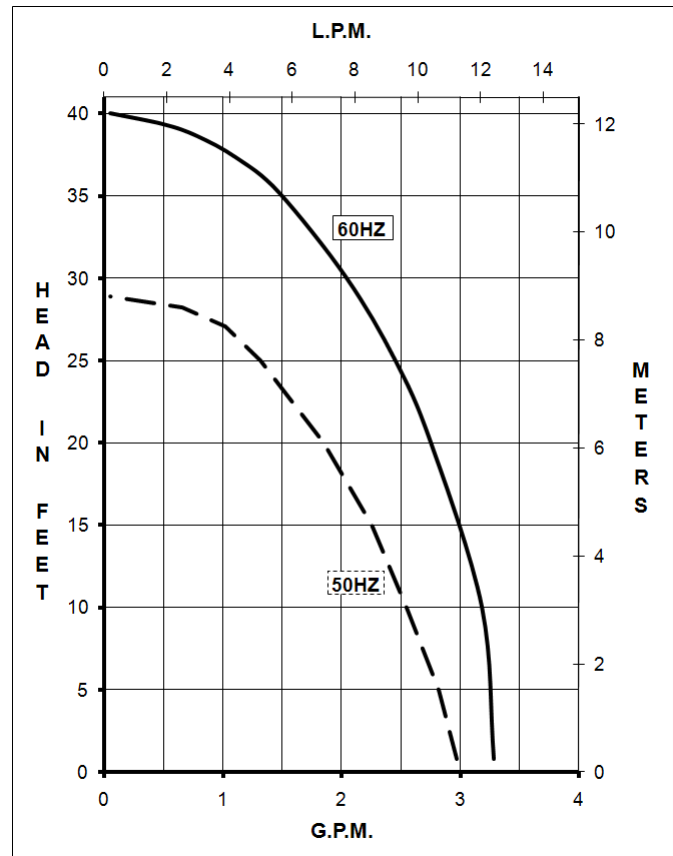
320-AP-MD 320-CP-MD



320-CP-MD



320-AP-MD



MODEL ABBREVIATIONS:

A = Smooth Inlet/Outlet, C = Threaded Inlet/Outlet
MD = Magnetic Drive

CONSTRUCTION & SERVICING:

March Centrifugal Magnetic Drive Pumps eliminate the conventional shaft seals found in most pumps. Hence, there is no rotating seal to wear and allow the liquid being pumped to leak out. The Model 320 has an open air fan cooled motor, rated for continuous duty. All pumps are serviceable with the use of a screwdriver. The only moving part other than the motor is the Impeller Assembly. This assembly rotates on a stationary shaft and up against a thrust washer. These are the only parts that can wear, and may need to be replaced. See the Repair Parts List for replacement parts.

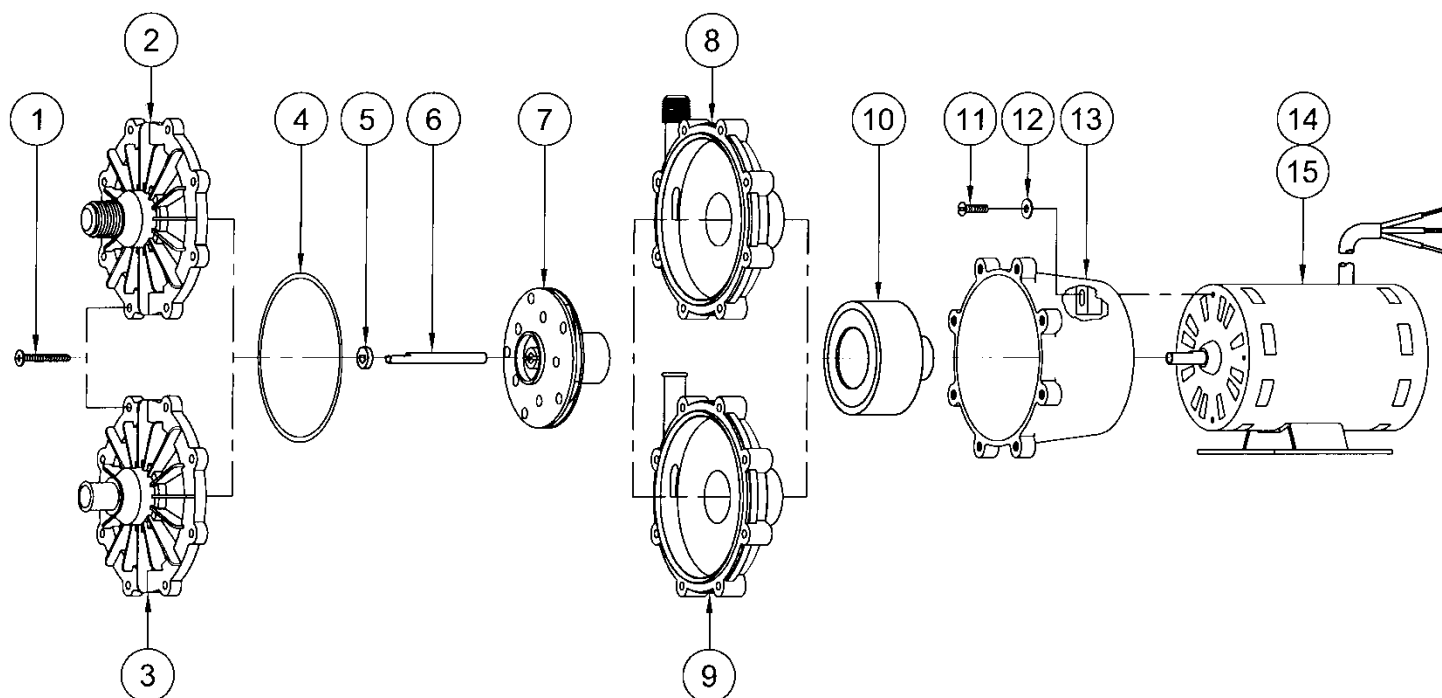
OPERATION:

Pumps are not self priming and will not produce a suction lift and must be installed with a positive flooded suction. March Pumps utilize the liquid being pumped to lubricate the Impeller Assembly rotating on the stationary shaft, and therefore they should not be run dry. Contact the factory for special applications. A trimmed impeller may be necessary when pumping a liquid with a specific gravity or viscosity greater than water as well in cases of high liquid temperature.

ELECTRICAL:

Models are 115 Volt or 230 Volt, 50/60 Hz, 1 phase, A.C. The motors are thermal overload protected, and the motor and overload combinations are U.L. and C.S.A. list-ed. All cord sets are U.L. approved 18/3 wire, SJO or SJT cords. The motors have 3 foot long cords with no plug attached.

SPECIFICATIONS			320-AP-MD	320-CP-MD
Max Flow	50Hz	lpm	11.3	11.3
	60Hz	gpm	3.3	3.3
Max Head	50Hz	m	8.8	8.8
	60Hz	ft (psi)	40 (17.3)	40 (17.3)
Inlet		5/8" OD	1/2" MPT	
Outlet		1/2" OD	3/8" MPT	
Max Internal Pressure	psi		50	50
	bar		3.4	3.4
Max Liquid Temperature	°F		190	190
	°C		87	87
Packed Weight		kg/lbs	4.5/10	4.5/10
Motor Type			Air Cooled 115 or 230	Air Cooled 115 or 230
Phase			1	1
50Hz	Volts	115 230	115	230
	Watts	121 126	121	126
	Amps	1.75 0.75	1.75	0.75
	Kw	0.062 0.062	0.062	0.062
	Rpm	2850 2850	2850	2850
60Hz	Volts	115 230	115	230
	Watts	172 165	172	165
	Amps	1.75 0.75	1.75	0.75
	Hp	1/12 1/12	1/12	1/12
	Rpm	3450 3450	3450	3450
Electrical Connection			Cord	Cord
Overall Pump Dimensions (Inches)	Height	5.01	5.01	5.01
	Width	5.33	5.32	5.37
	Length	9.99	10.30	9.99
Overall Pump Dimensions (cm)	Height	12.7	12.7	12.7
	Width	13.5	13.5	13.6
	Length	25.3	26.1	25.3



NOTE: When attaching drive magnet to the motor shaft, position the face of the drive magnet 3/32 inch below the face of the motor bracket.

REPAIR PARTS LIST

ITEM	DESCRIPTION	MATERIAL	QTY	PART #	320-AP-MD	320-CP-MD
1	Screw #8-32 x 1-1/4" Lg.	Stainless	8	0320-0008-1000	S	S
2	Cover (1/2" MPT Inlet)	Polypropylene	1	0320-0011-1000	O	S
3	Cover (5/8" OD Inlet)	Polypropylene	1	0320-0003-1000	S	O
4A	"O" Ring	Viton	1	0320-0006-1000	S	S
4B	"O" Ring	EPDM	1	0320-0012-1000	O	O
5	Thrust Washer	Ceramic	1	0130-0028-1000	S	S
6	Shaft	Ceramic	1	0130-0024-1000	S	S
7	Impeller Assembly	Polypropylene	1	0320-0004-0300	S	S
8	Rear Housing w/Thrust Washer (3/8" MPT Outlet)	Polypropylene/Ceramic	1	0320-0010-0100	O	S
9	Rear Housing w/Thrust Washer (1/2" OD Smooth)	Polypropylene/Ceramic	1	0320-0002-0100	S	O
10	Drive Magnet Assembly		1	0130-0043-0200	S	S
11	Screw #8-32 x 5/8" Lg.	Stainless	4	0618-0027-1000	S	S
12	Washer	Stainless	4	0135-0016-1000	S	S
13	Motor Bracket		1	0320-0007-0100	S	S
14	Motor 115V, 50/60Hz		1	0145-0012-1000	S	S
15	Motor 230V, 50/60Hz		1	0145-0029-1000	S	S

NOTE: Contact Factory for other materials and/or parts not listed.

Legend: S = Standard, O = Optional

MATERIALS IN CONTACT WITH SOLUTION:

Glass filled polypropylene, ceramic, & Viton.

NOTES:

All specifications & data are based on pumping water and are intended for use as a guideline only. Ratings & dimensions may vary depending on the current motor being used.

LIMITED WARRANTY:

March pumps are guaranteed only against defects in workmanship or materials for a period of one year from date of manufacture pumping water. On all other solutions, contact the factory for application assistance. March Pump Application Worksheet 0750-0130-1000 is available for additional warranty information.